

ArduCam[®]

Acrylic Case for Raspberry Pi Camera

Installation Guide with B0033

INTRODUCTION

Arducam designed this acrylic case to use with several camera modules for Raspberry Pi from Arducam and the Raspberry Pi Foundation.

The following instructions show you how to assemble the acrylic pieces with the Arducam B0033 for Raspberry Pi Camera. The time required to build this is about **10 minutes**.

You can find more information, including **video guidance** and **high-definition pictures**, on our website: <http://www.arducam.com/docs/cameras-for-raspberry-pi/camera-case/>

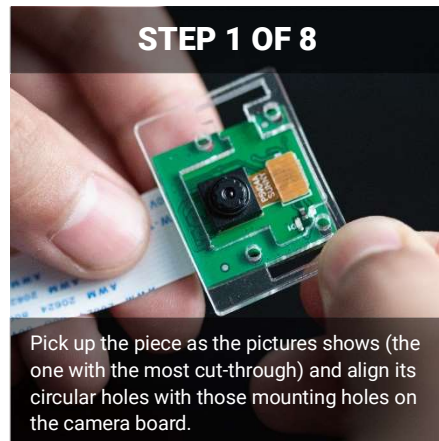
Feel free to drop us a line if you need our help: support@arducam.com

GET READY

You can:

- Sit in front of a desk,
- Remove the film protector on the acrylic,
- Get a screwdriver

and you are good to go.



The gap should lie between the left two holes while the white ribbon cable is on the bottom side.

