



5-50mm Varifocal USB Camera Module



2MP AR0230

(SKU: B0356)

QUICK START GUIDE

SPECS

Camera	
Sensor	1/2.7" AR0230
Resolution	2MP 1928H x 1080V
Data Format	MJPEG/YUY2
Dynamic Range	Up to 96 dB
Frame rate	MJPEG 30fps@1920 x 1080/1280 x 720/1280 x 1024/1024 x 768/800 x 600/640 x 480; YUY2 5fps@1920 x 1080/1280 x 720; 30fps@640 x 480
Lens	
Field of View (FOV)	40°-8° (H)
Lens Mount	CS
Focal Length	5-50mm
IR Sensitivity	Integral IR filter, visible light only
Functionality and Compatibility	
Auto Controlled Features	Contrast/ Saturation/ Exposure / White balance / Acutance
System Compatibility	Win7/8/10, Linux and Mac with UVC
Power	
Power Supply	DC 5V
Working Current	MAX 300mA
Physical	
Operating Temp.	-4°F~158°F (-20°C~+70°C)
Dimension	50x50x90mm
Connector No.	USB 2.0 Type-B
Cable Length	6.56ft (2M)

INTRODUCTION

• About Arducam

Arducam has been a professional designer and manufacturer of SPI, MIPI, DVP and USB cameras since 2012. We also offer customized turnkey design and manufacturing solution services for customers who want their products to be unique.

• About this USB Camera

The B0356 is a new member of the Arducam's USB camera family. It's an 2MP, UVC compliant, varifocal USB 2.0 camera. This USB camera is based on the 1/2.7" AR0230 image sensor, and you can read more about its specs in the next chapter. Arducam also provides the sample application that demonstrates some of the features of this camera.

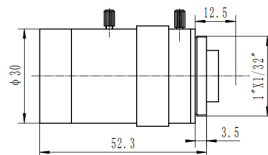
• About UVC

The B0356 is a UVC-compliant camera. The native USB drivers of Windows, Linux and Mac shall be compatible with this camera so that it does not require extra drivers to be installed.

• About Customer Service

If you need our help or want to customize other models of USB cameras, feel free to contact us at support@arducam.com

LENS DIAGRAM



QUICK START

• How to download the program

Download the APP Amcap from the following link <https://www.arducam.com/downloads/app/AMCap.exe>

NOTE:

1. For Mac OS, please open the native software facetime and select the video camera "USB Camera".
2. If used with the Android device, USB Camera APP and connect adapter are needed.

• How to connect the camera

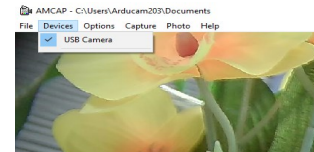
Connect the one end of the USB cable to the connector provided on the back of B0356, and connect the other end to the USB 2.0 host controller on the computer.

How to use the program (Windows demo only)

The Menu bar at the top of the shown image contains few menu items and the current preview resolution and the frame rate are displayed on the bottom bar when the application is running. The following sections describe each of the menu items in detail.

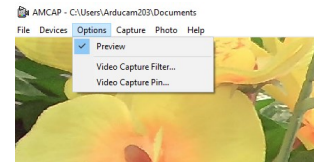
• Menu>Devices

This menu will show the available video devices to host PC. The B0356 named "USB Camera".



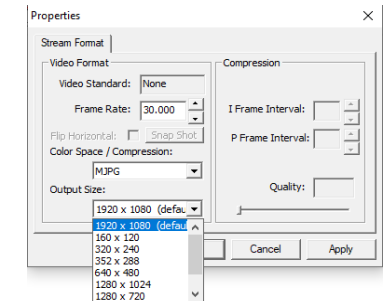
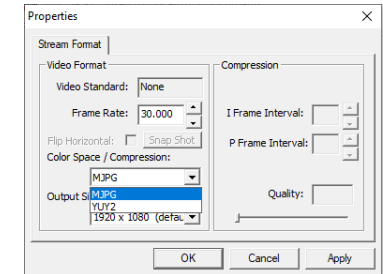
• Menu>Options

The options menu can be used to select the preview and image parameters supported by this camera.



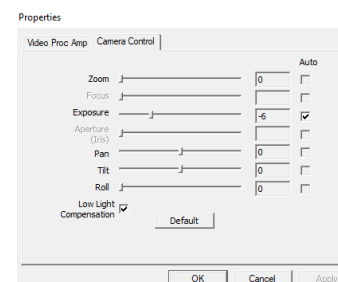
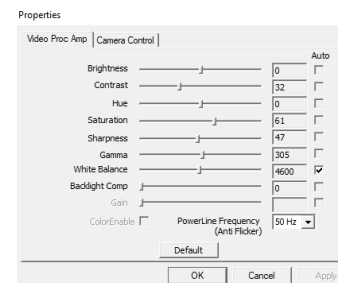
How to use the program (Windows demo only)

- Video Capture Pin



How to use the program (Windows demo only)

- Video Capture Filter -> Video Proc Amp/Camera Control



How to use the program (Windows demo only)

• Menu> Capture

The capture menu is used to capture the still image and video by using this application. You can also select the related parameters.

